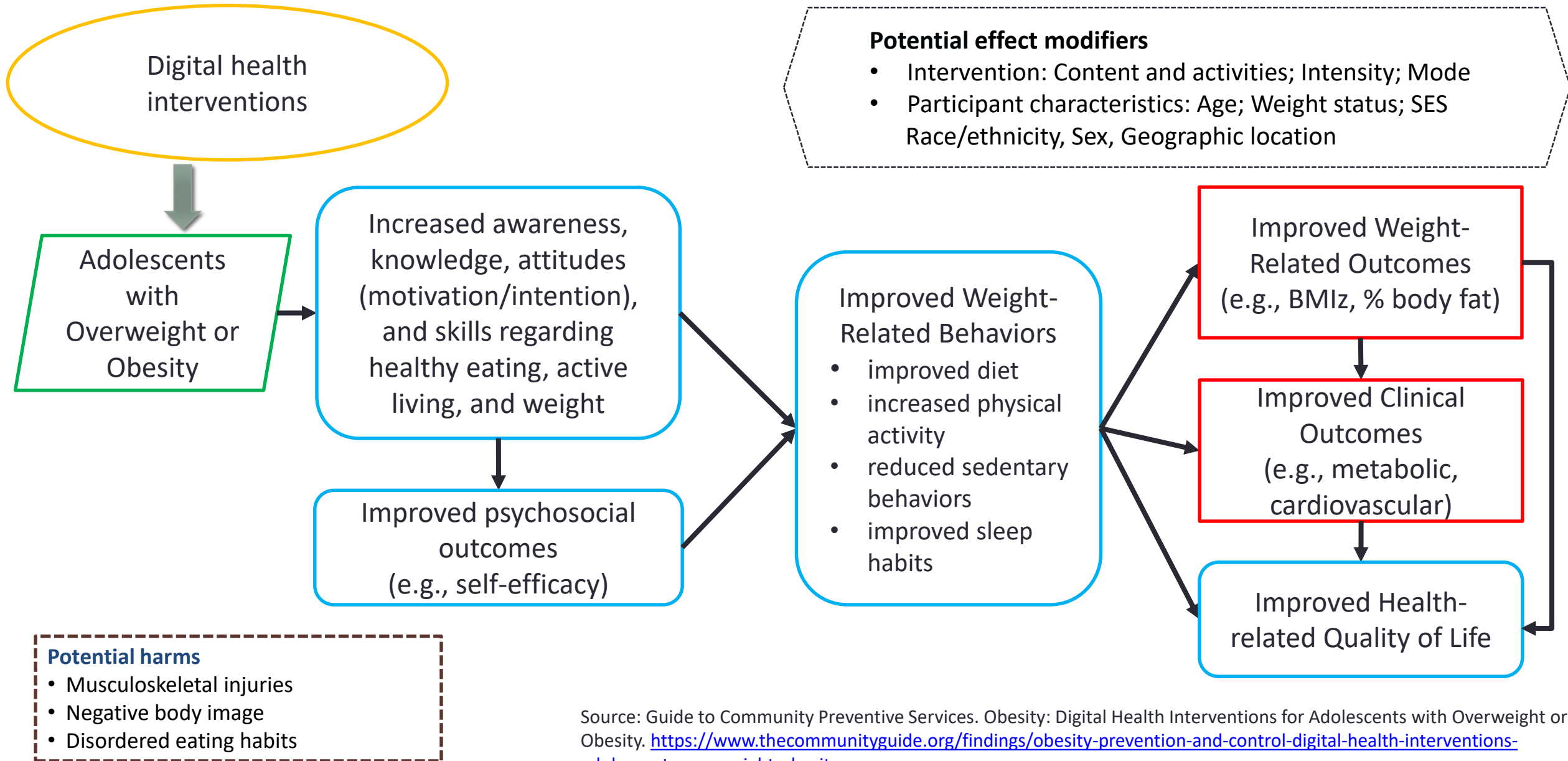











# Analytic Framework: Digital Health Interventions for Adolescents with Overweight or Obesity

Accessible Version: <https://www.thecommunityguide.org/sites/default/files/assets/AF-Obesity-Digital-Health-Adolescents-508.pdf>



Source: Guide to Community Preventive Services. Obesity: Digital Health Interventions for Adolescents with Overweight or Obesity. <https://www.thecommunityguide.org/findings/obesity-prevention-and-control-digital-health-interventions-adolescents-overweight-obesity>

# Icons in Community Guide Analytic Frameworks

Icon	Interpretation
	Intervention
	Recommendation outcome
	Other intermediate outcome/variable (that are not recommendation outcomes)
	Population
	Potential Effect Modifiers (affecting causal relationships)
	Potential Additional Benefits/Potential Harms
	Unidirectional block arrows are applied between intervention and population icons
	Unidirectional arrows for causal relationships
	Bidirectional arrows show feedback loops